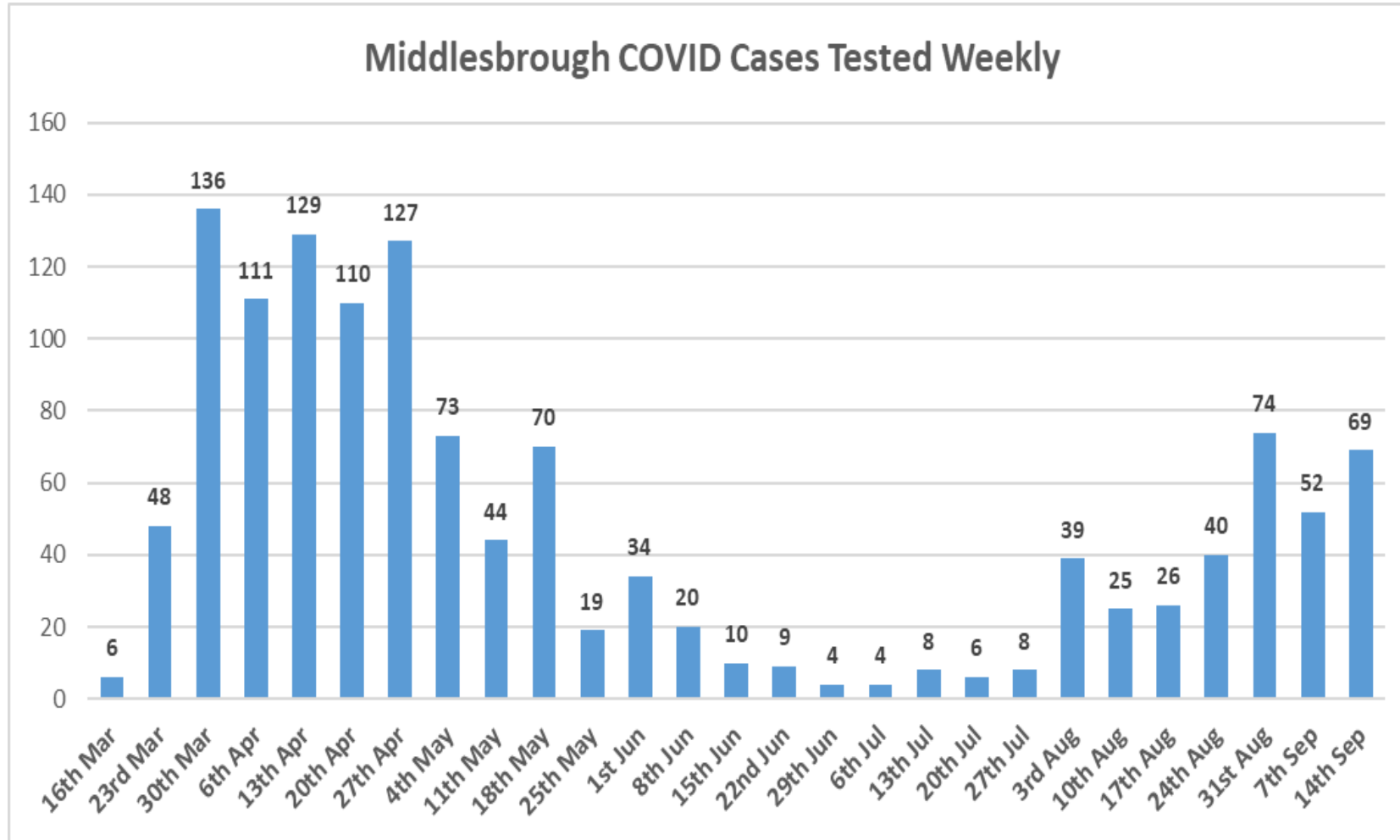


Middlesbrough

Covid-19 Cases Summary

22nd September 2020

Cases by Week



Cases by week show the significant reduction in cases during May and low numbers during June and July before and increase in the beginning of August where the first new outbreaks were reported and continuing to increase during September.

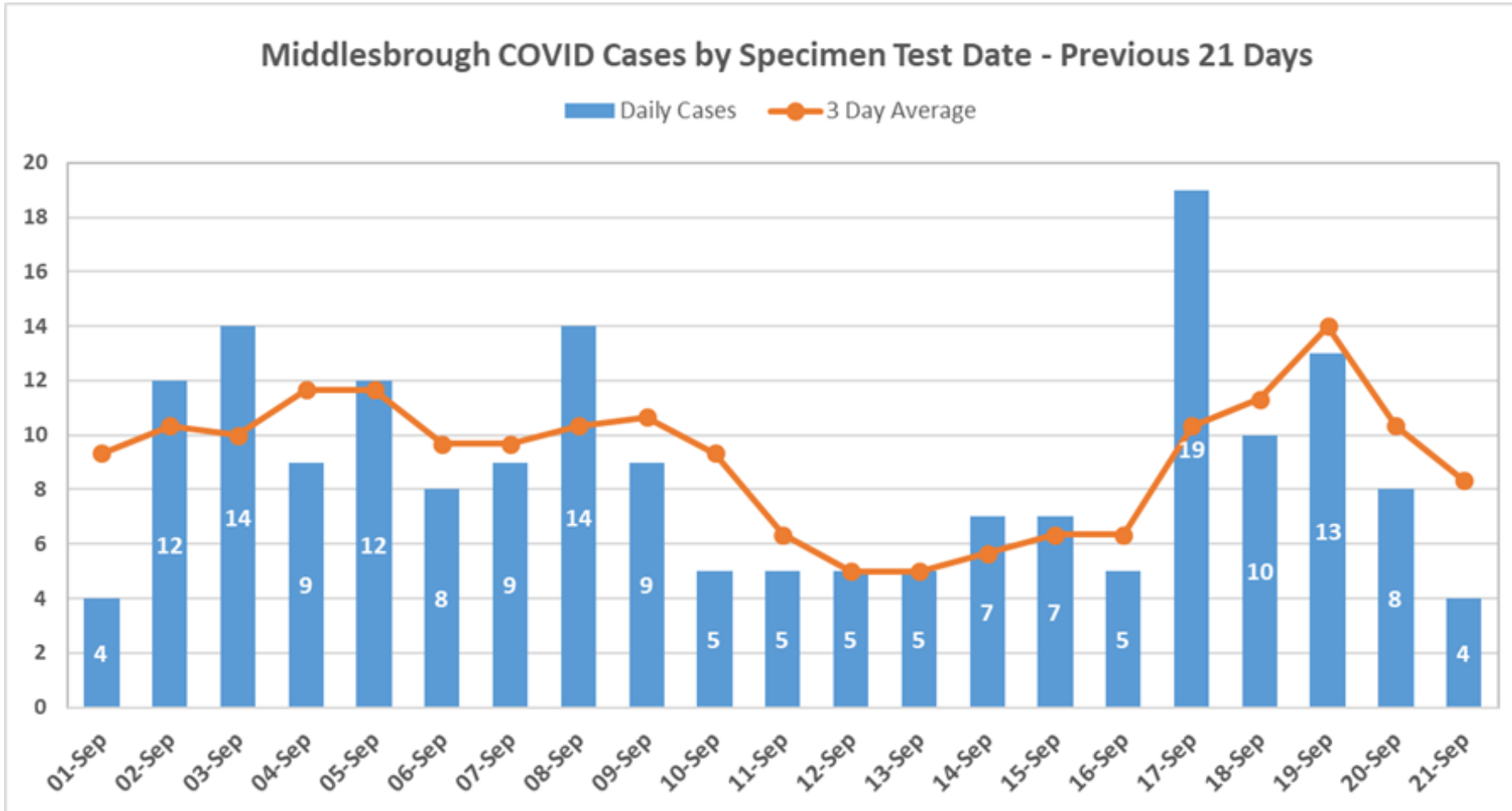
North East Region Summary

North East LA COVID Cases - Tested in Current 7 & Previous 7 Day Periods

Cases tested up to 19th September 2020

North East LA	Current 7-Day Period (13th - 19th Sep)		Previous 7-Day Period (6th - 12th Sep)		% Change Rate	Total Cases	
	Number	Rate	Number	Rate		Number	Rate
South Tyneside	219	145.1	145	96.0	51.0%	1,499	993
Newcastle upon Tyne	369	121.9	207	68.4	78.3%	2,419	799
Sunderland	287	103.3	241	86.8	19.1%	2,576	928
Gateshead	202	100.0	172	85.1	17.4%	1,852	917
North Tyneside	160	77.0	109	52.4	46.8%	1,318	634
Northumberland	208	64.5	87	27.0	139.1%	2,040	633
County Durham	269	50.7	225	42.4	19.6%	4,175	788
Hartlepool	47	50.2	54	57.7	-13.0%	802	856
Middlesbrough	60	42.6	55	39.0	9.1%	1,289	914
Stockton-on-Tees	70	35.5	64	32.4	9.4%	1,219	618
Redcar & Cleveland	38	27.7	34	24.8	11.8%	865	631
Darlington	28	26.2	25	23.4	12.0%	692	648

Cases Previous 21 Days



The rolling 3 day average shows daily cases have remained steady before increasing over the previous 4 days.

A lag in cases being added may be the cause of the drop in the last day.

Pillar 2 Testing Rates

Data up to 18th September 2020

Local Authority	Rate of Postivities per 100k	Rate of Tests per 100k	% Positive	Positive Tests	Tests
South Tyneside	100.7	1,515	6.6%	152	2287
Newcastle upon Tyne	100.4	1,613	6.2%	304	4886
Sunderland	87.9	1,683	5.2%	244	4674
Gateshead	85.6	1,526	5.6%	173	3083
North Tyneside	67.3	1,699	4.0%	140	3533
Northumberland	51.8	1,681	3.1%	167	5419
Hartlepool	45.9	1,836	2.5%	43	1720
County Durham	41.5	1,740	2.4%	220	9225
Middlesbrough	33.3	1,641	2.0%	47	2313
Stockton-on-Tees	25.8	1,506	1.7%	51	2972
Redcar and Cleveland	24.1	1,471	1.6%	33	2017
Darlington	19.7	1,472	1.3%	21	1572

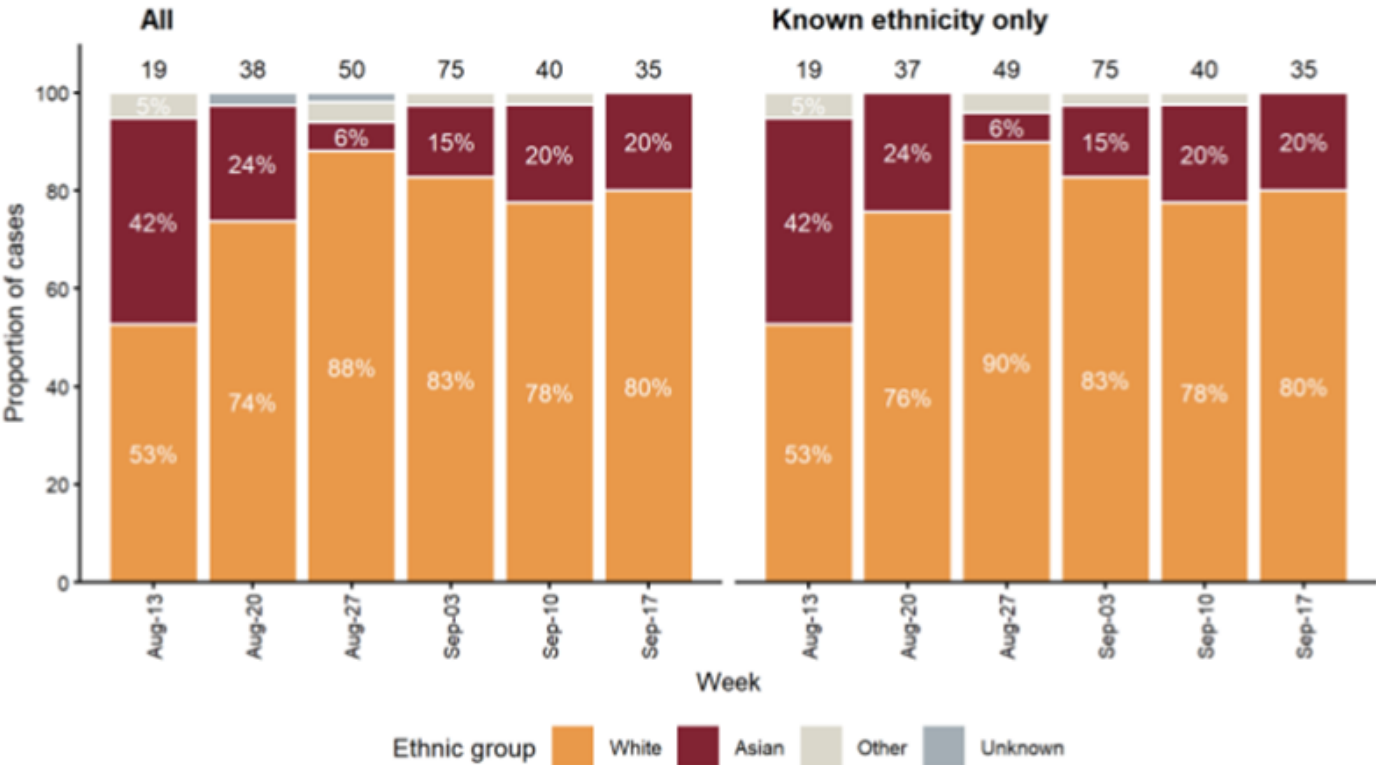
The table below shows the LA ranks for rate of positive Pillar 2 tests per 100,000 population.

Data covers the previous 7 days up to 18th September.

Middlesbrough ranks 44th highest for rate of positive tests however the rate of tests per 100,000 shows Middlesbrough is ranked 34th highest nationally.

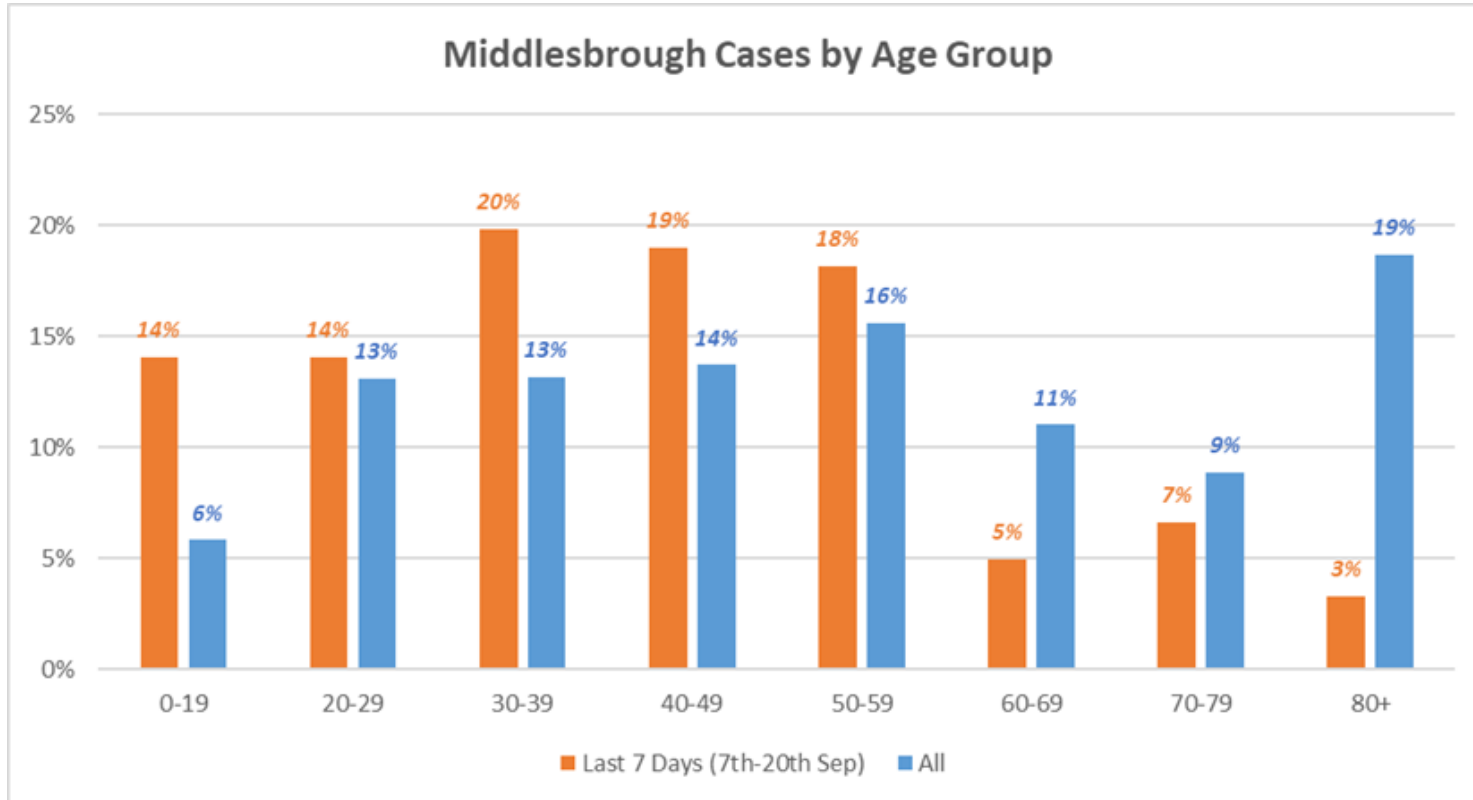
Ethnicity

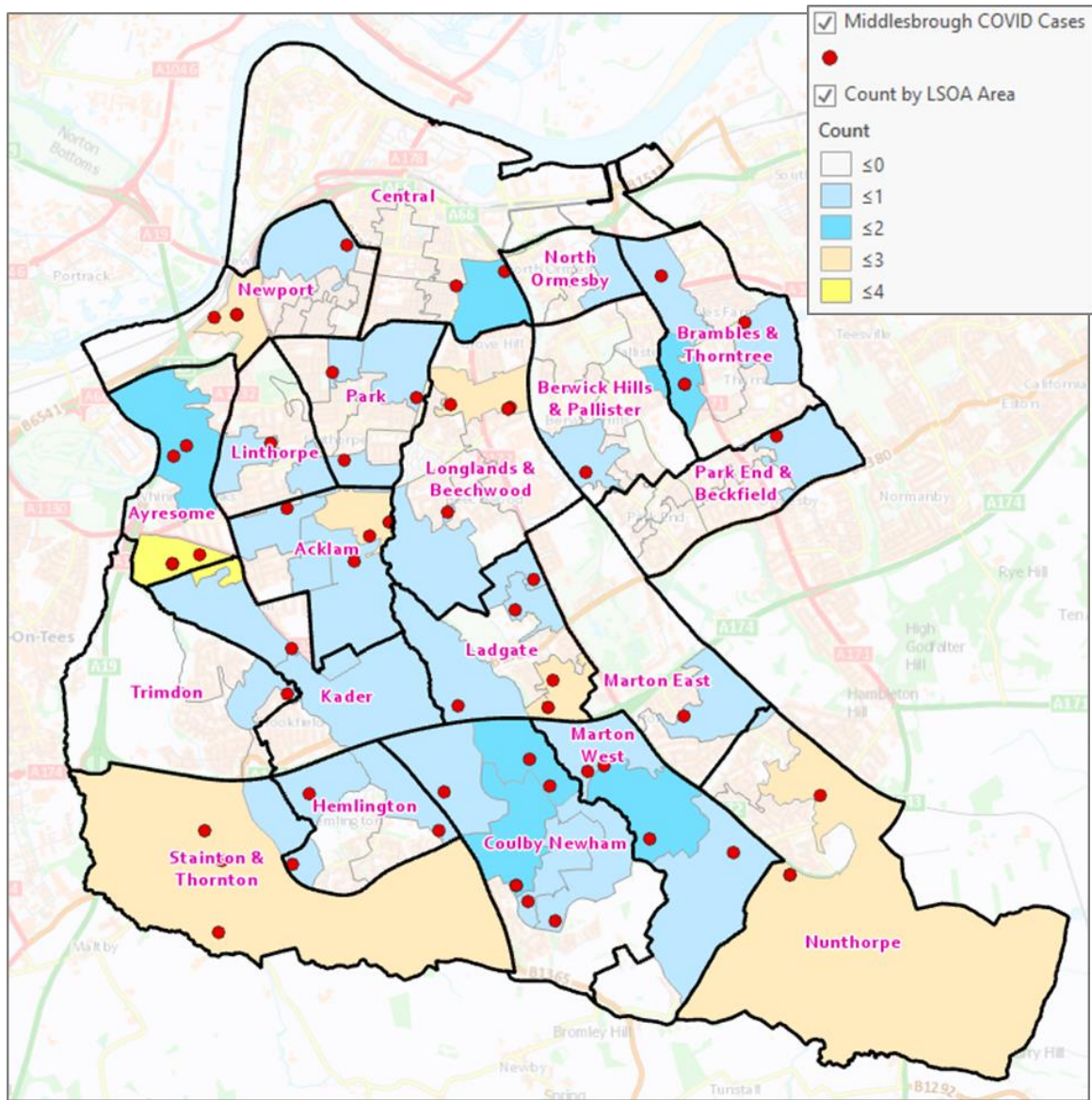
Data shows cases by ethnic group over the previous 6 weeks. The proportion of cases affecting Asian residents in Middlesbrough was high during the first half of August but this changed to mostly affecting White British residents.



Age

Data shows that cases in the most recent 14 days affected young people and those in the 30-49 age group, with much fewer cases in the older age groups, however we are starting to see cases in the older age groups increasing.





COVID Cases Map – Previous 7 Days.

Tested between 13th Sep – 19th Sep 2020.

Positive COVID cases in the previous 7 days (red) and the count by LSOA area (shading).

Total of 66 cases that tested positive